

MagnaClean® residential dirt filter technical reference guide



MagnaClean™ Micro2

Pipe size: ¾" NPT
Max flow rate (GPM): 13
Max working pressure (PSI): 87
Max working temp: 203°F / 95°C
Weight (lbs): 4.8
Product code: FL1-03-02829
Suits BTU boiler range: Less than 100,000 BTU



MagnaClean™ Professional2

Pipe size: 1" NPT
Max flow rate (GPM): 13
Max working pressure (PSI): 87
Max working temp: 203°F / 95°C
Weight (lbs): 6
Product code: FL1-03-02988
Suits BTU boiler range: Up to 150,000 BTU



MagnaClean™ Professional2XP

Pipe size: 1 ¼" NPT
Max flow rate (GPM): 21
Max working pressure (PSI): 87
Max working temp: 203°F / 95°C
Weight (lbs): 7.6
Product code: FL1-03-02990
Suits BTU boiler range: Between 150,000 - 300,000 BTU



MagnaClean™ DualXP

Pipe size: 1 ½" NPT
Max flow rate (GPM): 26
Max working pressure (PSI): 87
Max working temp: 203°F / 95°C
Weight (lbs): 18.2
Product code: FL1-03-02991
Suits BTU boiler range: Between 300,000 - 399,000

Maximize system efficiency and performance with ADEY's MC3+® Cleaner, MagnaCleanse® flushing unit, and MC1+® Protector.

Product codes:

MC1+ Protector: CH1-03-01669-US

MC1 Rapide™ Protector: CH1-03-01640-US

MC3+ Cleaner: CH1-03-01670-US

MC3+ Rapide™ Cleaner: CH1-03-01645-US

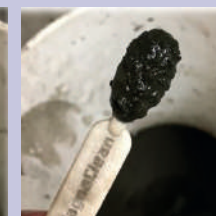
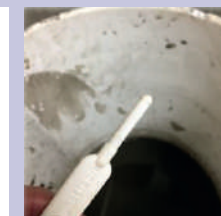
MagnaCleanse: MACK01-US



ADEY's filter tips

- 1 Install on the return, before the boiler
- 2 Make sure the filter is upright, and use the 360° rotational valves to install on any pipework angle
- 3 Quick dose our MC3+ Cleaner and MC1+ Protector directly through the filter canister

FREE MagnaClean RapidTest!



Before

After

Test for magnetite via 3 quick and easy steps with a MagnaClean RapidTest®!

FREE when you sign up to up our newsletter!

Scan code above or visit:

www.adey.com/us/newsletter-sign-up

MAR-01-06028



adey.com/us | info@adeyusa.com | +1 412 406 8292

Connect with us!



ADEY North America



ADEY_NA



ADEY_USA



ADEY_NorthAmerica



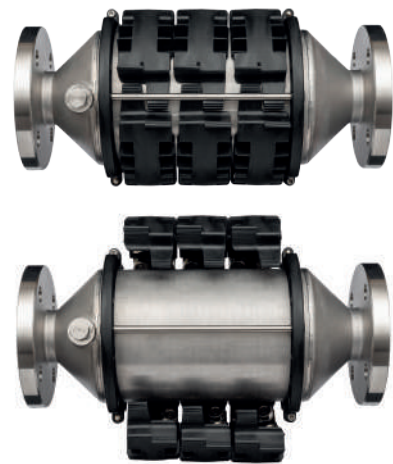
ADEY North America

See reverse for commercial filter guide

MagnaClean[®] commercial dirt filter technical reference guide

MagnaClean[™] DRX

All filters are built to ASME standards and CRN approved!



	2" Pipe	3" Pipe	4" Pipe
Max Flow rate (GPM)	140	270	400
Max working pressure (PSI)	145	145	145
Max working temp	212°F / 100°C	212°F / 100°C	212°F / 100°C
Weight (lbs)	24.5	36.2	46.1
Product code	FL1-03-03784	FL1-03-03785	FL1-03-03786

MagnaClean[™] Commercial

All filters are built to ASME standards and CRN approved!



	2" Pipe	3" Pipe	4" Pipe	6" Pipe	8" Pipe
Max Flow rate (GPM)	140	270	405	530	660
Max working pressure (PSI)	**	**	**	**	**
Max working temp	**	**	**	**	**
Weight (lbs)	54.7	88.6	103.4	211.3	241.4
Product code	FL1-03-02700	FL1-03-02701	FL1-03-02702	FL1-03-02703	FL1-03-02704

** For max working pressure and max working temperature, call ADEY on +1 509 216 7882

Maximize system efficiency and performance with ADEY's MC3+[®] Cleaner and MC1+[®] Protector.

Treats up to 350 gallons

MC1+ Protector: CH1-03-01723

MC3+ Cleaner: CH1-03-01725

Treats up to 700 gallons

MC1+ Protector: CH1-03-01724

MC3+ Cleaner: CH1-03-01726



In-line and side-stream filtration options

IN-LINE: Install in-line on the return before the boiler to maximize first pass capture and protect the boiler.

SIDE STREAM:

- 1 Times flow rate by 10% to send 10% of flow through filter. Choose a filter based on the 10% flow rate
- 2 Divide system volume by 360 to obtain GPM which will filter entire system four times per day. Choose a filter based on the GPM

Where to install:

Install filter across the system pumps to allow the pump differential to flow system water through the filter.

Benefits:

- 1 Cost saving
- 2 No additional resistance on heat pump
- 3 Installation design creativity

For sizing information, ask at counter or call ADEY on +1 509 216 7882